



Faculty of Education
and Human Development

教育及人類發展學院



Department of
PSYCHOLOGY

心理學系

Bachelor of Social Sciences (Honours) in Psychology

心理學榮譽社會科學學士課程

Department of Psychology
The Education University of Hong Kong

Dr Arita Chan
Admission Officer

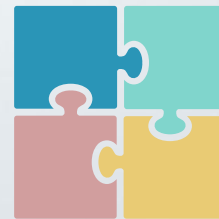




ARE YOU INTERESTED IN STUDYING PSYCHOLOGY?

ARE YOU INTERESTED IN BECOMING A PSYCHOLOGIST?

- + Are you interested in people?
- + Do you want to understand people?
- + Do you want to help people?
- + Do you have a scientific mind?





WHAT IS PSYCHOLOGY?



THE HONG KONG
Psychological Society
香港心理學會



PSYCHOLOGY

What is Psychology

Psychology is both an applied and basic science that concerns the human mind and behavior. Within psychology itself, there are various topics; for example, sensation and perception, consciousness, human development, learning and memory, language and cognition, motivation and emotion, personality, intelligence, abnormal psychology, psychotherapy and intervention etc. Psychology is a very diverse and holistic discipline in modern social science in applying scientific evidence to explain various aspects of human mentality and activities. Psychology involves a whole spectrum of human activity from schooling to enhancing an employee's productivity in international organizations. Applications of psychology include assessment, psychotherapy, counseling, performance enhancement, and many other areas to improve an individual's psychological well-being.

- ⇒ Understand behaviors, feelings, and thoughts of people
- ⇒ Promote well-being of people

STUDY OF HUMAN MIND AND BEHAVIOUR: EXAMPLE 1

SELECTIVE ATTENTION

- + The **capacity of our brains** to take care of everything around us **is very limited**, so it is impossible for us to pay attention to each of these sensory experiences.
- + Therefore, while our brain **focuses our attention on some important elements** of our environment, it **puts all other stimuli in the background**.

STUDY OF HUMAN MIND AND BEHAVIOUR: EXAMPLE 2

ABC MODEL (ELLIS, 2000)



- + Our emotions are not caused by an induced event, but by our interpretation and evaluation of the event.



WHAT DO PSYCHOLOGISTS DO?

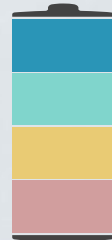
- + Here are just some examples:
 - + Clinical psychologist
 - + Provide psychological assessment and intervention
 - + Educational psychologist
 - + Design curriculum, enhance learning motivation of students, help students with SEN
 - + Counselling psychologist
 - + Provide therapeutic guidance on wellbeing and growth
 - + Industrial-organizational psychologist
 - + Provide staff training and development for an organization



So, PSYCHOLOGISTS HELP DEAL WITH PRACTICAL PROBLEMS

SUCH AS

- + Helping alleviate educational problems
- + Helping people overcome depression, stress, or trauma
- + Reducing the effect of parental divorce on children
- + Helping people to deal with addictions
- + Speeding up recovery from brain injury in patients
- + Helping to stop or prevent bullying at school
- + Helping people to be happy at work and perform well
- + Helping athletes to perform better in competitions...



Bachelor of Social Sciences (Honours) in Psychology

心理學榮譽社會科學學士

**Four-year Full-time (First Year Entry) /
Two-year Full-time (Senior Year Entry)**

Medium of Instruction: English



Offers the **first step**
towards being a
professional
psychologist

Areas of Concentration

- Health Psychology
- School Psychology
- Human Relations and Communication



GENERIC INTENDED LEARNING OUTCOMES

**Problem
Solving
Skills**



**Oral &
Written
Communication
Skills**



**Critical
Thinking
Skills**



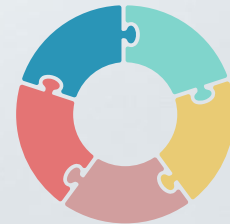
**Ethical
Decision
Making**



PROGRAMME INTENDED LEARNING OUTCOMES

Graduates can competently integrate the science and application of psychology, and can implement evidence-based practice:

1. **Demonstrate** professional knowledge of the major principles/theories of psychology
2. **Apply** major psychological principles/theories to **analyze** human behaviours in real life situations
3. **Utilize** major psychological principles/theories innovatively and responsibly to address issues locally as well as globally
4. **Evaluate** research evidence using scientific principles and ethical standards
5. **Design and carry out** psychological research professionally and ethically to create new knowledge and insights relevant to the needs of Hong Kong and beyond



PROGRAMME STRUCTURE*

(FIRST-YEAR ENTRY: 4-YEAR PROGRAM)

Major (60cps)

Foundation and Core Courses (including Major Inter-disciplinary course^ & Cross-Faculty Core Course^)
(30cps)
(10 courses)

Major Electives
(21cps)
(7 courses)

Research Internship / Industrial Internship
(3cps)
(1 course)

Final Year Project
(6cps)
(2 courses)



Electives
(30cps, 10 courses)

General Education
(22cps,
8 courses + ePortfolio)

Language Enhancement (English and Chinese)
(9cps, 3 courses)

Total: 121 credit points (cps)

*The programme structure is subject to change.

^ including GBA visit(s)

PROGRAMME STRUCTURE*

(SENIOR-YEAR ENTRY: 2-YEAR PROGRAM)

Major (39cps)

Foundation and
Core Courses
(including
Major Inter-
disciplinary
Course^ &
Cross-Faculty
Core Course^)

(27cps)
(9 courses)

Major
Electives

(3cps)
(1 course)

Research
Internship
/
Industrial
Internship

(3cps)
(1 course)

Final Year
Project

(6cps)
(2 courses)



Electives
(15cps, 5 courses)

General Education
(6cps, 2 courses)

Total: 60 credit points (cps)

*The programme structure is subject to change.

^ including GBA visit(s)

FOUNDATION & CORE COURSES

(FIRST-YEAR ENTRY: 4-YEAR PROGRAM)



Basic Principles of Psychology

Human Development across the Lifespan

Social Psychology

Biological Psychology

Cognitive Psychology

Counselling and Guidance (Major IC)*

Cross-Faculty Core Course*

Statistical Methods in Psychology I & II

Personality Psychology

**with GBA field trip(s)*

FOUNDATION & CORE COURSES

(SENIOR-YEAR ENTRY: 2-YEAR PROGRAM)

Human Development across the Lifespan

Biological Psychology

Cognitive Psychology

Social Psychology

Counselling and Guidance (Major IC)*

Cross-Faculty Core Course*

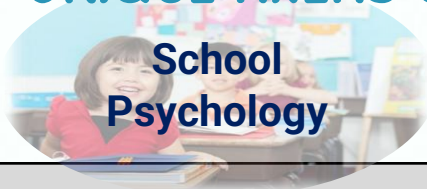
Statistical Methods in Psychology I & II

Personality Psychology



**with GBA field trip(s)*

UNIQUE AREAS OF CONCENTRATION



Compulsory courses (6 cps)			
1.	Professional Issues and Practices in Psychology		
2.	Educational Psychology	Health Psychology	Interpersonal Communication skills
Choose THREE of the following concentration-related courses (9 cps)			
1.	Child and Adolescent Psychopathology	Abnormal Psychology	Cross-cultural Psychology
2.	Stress and Coping	Stress and Coping	Stress and Coping
3.	Psychology of Language	Neuroscience and Psychology	Multicultural Minds in Communication
4.	Learning Theories and Processes	Theory and Practice of Psychotherapy	Industrial and Organizational Psychology
Concentration-related Internship (3 cps) – Research Internship (RI) / Industrial Internship (II)			
Concentration-related Final Year Project (3 cps) – Honours Project (HP) / Capstone Project (CP)			

SOME OF OUR INTERNSHIP PARTNERS



香港童軍總會
Scout Association of Hong Kong



香港路德會社會服務處
Hong Kong Lutheran Social Service, LC-HKS



東華三院力勤幼稚園
TWGHs Nickon Kindergarten



PEACE }
GENERATION }
和平世代 }



New Life
Psychiatric Rehabilitation Association
新生精神康復會



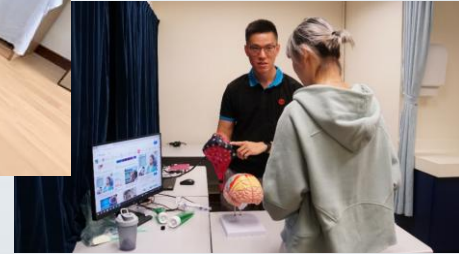
Save the Children
救助兒童會

EXPERIENTIAL LEARNING ACTIVITIES

- + Student Exchange Programmes
 - + Australia, Germany, UK, Korea, Sweden, Norway, Spain, Taiwan, Mainland, Netherlands, USA
- + Summer Programmes @ Partner Institutions
 - + Universities in Sweden, Korea, Finland, France, the Czech Republic
- + Psychology Carnival
- + Psychology Workshops/Seminar/Competition



+ Psychological and Behavioral Sciences Laboratory

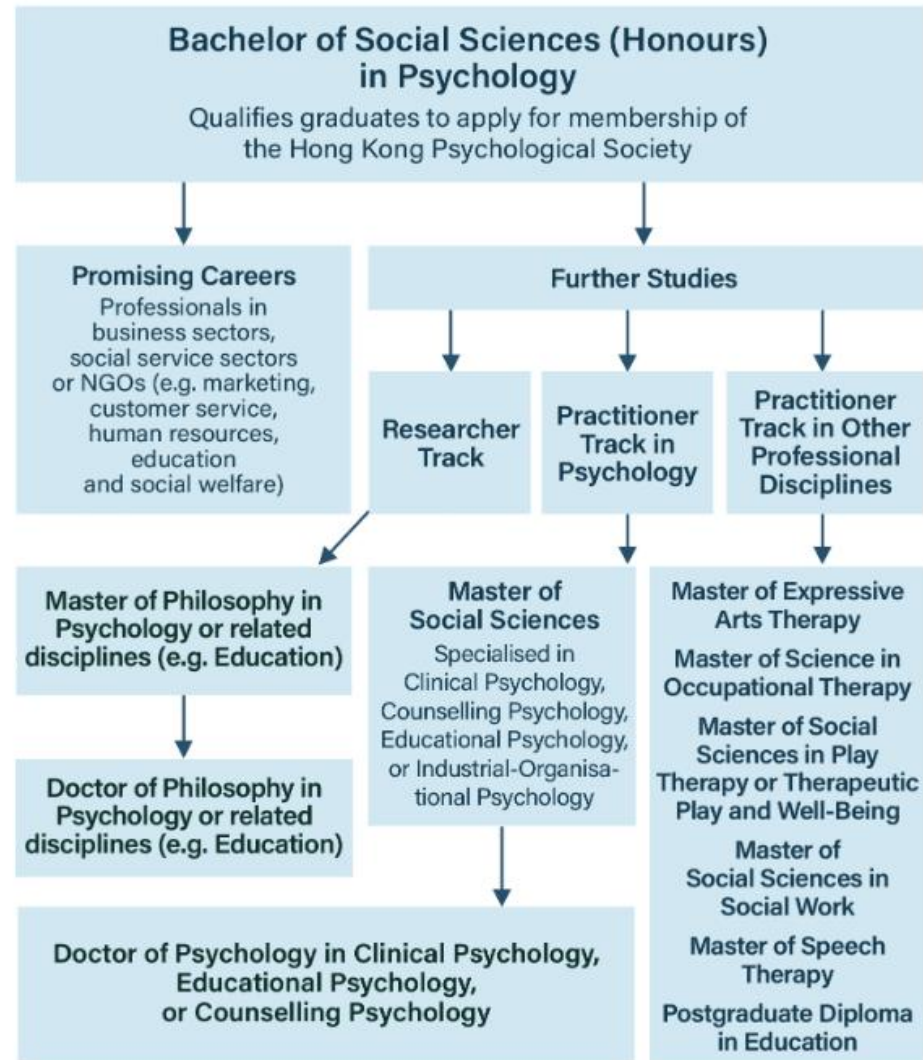


SAMPLE WORK FROM STUDENTS

- + A music video made by our yr 3 students:
 - + used AI generated tools to create a song in which psychological theory/knowledge was used to explain the topic “Haters”
 - + <https://www.youtube.com/watch?v=ZLFPBDYCN0k>

Special Features

- A rigorous programme with a comprehensive curriculum, evidence-based course materials, and a strong emphasis on integration of theory and practice
- Enthusiastic, dedicated, and supportive teachers
- Unique areas of concentration
- Industrial and/or Research Internship Opportunity
- 1st step towards a promising career as a professional psychologist or in psychology-related fields
- Qualifies graduates to apply for membership of the Hong Kong Psychological Society and other international psychological associations



PROSPECTS

Employment Status	2021 Graduates (86.96% Response)	2022 Graduates (80.70% Response)	2023 Graduates (83.61% Response)	2024 Graduates (82.4% Response)
Employed FT	38 (63.3%)	29 (63.0%)	36 (70.6%)	25 (59.5%)
Self-employed	0 (0%)	2 (4.3%)	3 (5.9%)	3 (7.1%)
Employed PT	5 (8.3%)	4 (8.7%)	1 (2.0%)	0 (0%)
Further Studies	11 (18.3%)	6 (13.0%)	5 (9.8%)	7 (16.7%)
Job Seeking	3 (5.0%)	2 (4.3%)	1 (2.0%)	1 (2.4%)
Not seeking for employment	2 (3.3%)	2 (4.3%)	3 (5.9%)	4 (9.5%)
Having emigrated/ returned to home country	1 (1.7%)	1 (2.2%)	2 (3.9%)	2 (4.8%)

GENERAL ENTRANCE REQUIREMENTS

(FIRST-YEAR ENTRY: 4-YEAR PROGRAM)



Application on the Strength of HKDSE Results

English Language	Level 3 or above
Chinese Language	Level 3 or above
Mathematics (Compulsory Part)	Level 2 or above
Citizenship and Social Development	Attained
2 Elective Subjects <i>(no more than one Applied Learning subject, excluding Applied Learning Chinese)</i>	Level 2 or above

Applied Learning subject (Category B) graded "Attained with Distinction / Attained with Distinction (I)/(II)" is accepted as one of the elective subjects



GENERAL ENTRANCE REQUIREMENTS – CONTINUED

(FIRST-YEAR ENTRY: 4-YEAR PROGRAM)

- + Admission in the past 3 years (for reference)
 - + Average of any Best 5 Subjects = 20-21

Cohort	Average of Best 5 Subjects
2023-24	20.52
2024-25	20.73
2025-26	20.72

- + Priority given to English language



JUPAS APPLICATION AND ADMISSION FIGURES (FIRST-YEAR ENTRY: 4-YEAR PROGRAM)

2023/24		2024/25		2025/26	
Applied*	Admitted	Applied*	Admitted	Applied*	Admitted
1,265	23	939	15	1145	18

* Joint University Programmes Admission Systems (JUPAS) (Bands A & B)

GENERAL ENTRANCE REQUIREMENTS

(SENIOR-YEAR ENTRY: 2-YEAR PROGRAM)



Associate Degree/Higher Diploma Final Year Students or Graduates

- + Have possessed Associate Degree or Higher Diploma qualification awarded by recognised institutions with a good GPA or
- + attending final year of a recognised Associate Degree / Higher Diploma programme or equivalent (subject to successful completion of the programme by August with a good GPA)

Transfer Students

- + Applicants who are currently enrolled in a Bachelor's degree or higher degree programme at a recognised local or non-local university will be considered on an individual basis.

Please refer to the below website for more information.

<https://www.apply.eduhk.hk/ug/senioryear>

GENERAL ENTRANCE REQUIREMENTS – CONTINUED

- + Interview (to be confirmed)
 - + How you present yourself
 - + Motivation and interest
 - + Logic in reasoning
 - + Knowledge in psychology
 - + Confidence
 - + People skill...





THANKS!

Programme Information

Programme Website

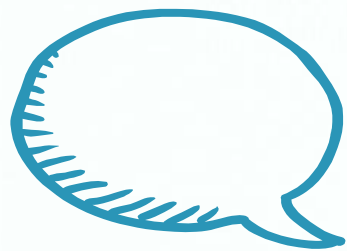
<http://www.eduhk.hk/fehd/en/programmes.php?id=150>

Programme Enquiries

Programme Email

△ Email: bsocscpsy@eduhk.hk

△ Tel: 2948 8442



Q & A ??

